

# R.S. PRUSSIA

Issue Number 67

I.A.R.S.P.C. Inc.

January 2006

## Prussia Points<sup>©</sup>

by *Allen Marcus*

### Iridescent “Tiffany” Colors Featured on R. S. Prussia Porcelain during Art Nouveau Period

The designers of R. S. Prussia used a combination of paint colors and firing techniques to create an extraordinary finish on selected pieces during the early 1900s. Adopting the look made famous by Louis Comfort Tiffany on his lamps and vases, the Rheinhold Schlegelmilch factory of Suhl, Prussia, applied a metallic iridescent finish on some of its “high end” pieces that became fashionable during what became known as the “art nouveau” period.

This rich-looking finish is popularly referred to as “Tiffany.” It has a slightly metallic sheen, sometimes with a bronze, blue, purple or green hue. Pieces with the Tiffany finish were often produced with the satin finish, which is a slightly textured look and gives the porcelain a muted appearance. In terms of current value, many of the Tiffany and satin finished pieces command high prices by collectors.

The Tiffany finish was created by mixing certain pigments and firing the pieces at slightly higher temperatures. In all likelihood, silver or gold paint was mixed in varying amounts with green, gray, and possibly small amounts of purple paint.



Photo 1

The result was a metallic, sometimes slightly reflective finish that appeared as a blended alloy.

Photographs 1 through 3 show a plate, creamer and cracker jar that have similar finishes and décor. They each have both the Tiffany and satin finishes and feature muted roses. An abundance of gold filigree and lace work was also used in the design of these pieces; the result being a subtle décor with elaborate borders.

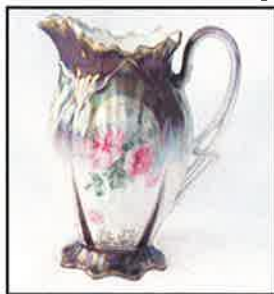


Photo 2



Photo 3



Photo 4

Photo 4 is a 5 inch footed bowl depicting the Autumn Season portrait in the iris mold. The Tiffany border has a purple sheen and additional gold tracery around the molded irises and central design was applied.

## In This Issue

Prussia Points	
<i>Allen Marcus</i> .....	1
Notes from the President	
<i>George Kandel</i> .....	2
Notes from the Secretary & Treasurer	
<i>Linn &amp; Leslie Schultz</i> .....	3
From your Editor	
<i>Linda Titus</i> .....	3
Letter to the Editor	
<i>Allen Marcus</i> .....	3
Humpty Dumpty	
<i>Lee Marple</i> .....	4
Change of Address .....	4
With Sincere Sympathy .....	4
Barnyard Scene	
<i>Harvey &amp; Mary Krage</i> .....	5
Thank You	
<i>Mary McCaslin</i> .....	5
Welcome New Members .....	5
Where do all the Buffoons Go?	
<i>Annette Hite</i> .....	6
Prussia In The Web	
<i>John Titus</i> .....	6-7
Convention 2006 .....	8
RS Prussia & More .....	8
Future Conventions .....	8

*Continued on page 3*

*The International Association  
of R.S. Prussia Collectors, Inc.*

*Visit Us At*

*http://www.rsprussia.com*

**President**

George Kandel, Indiana  
260-868-5263  
vinmark@fwi.com

**Vice President**

Terry Coy, Kentucky  
502-244-5391  
user258442@aol.com

**Secretary**

Leslie Schultz, Iowa  
563-678-2658  
lschultz@netins.net

**Treasurer**

Linn Schultz, Iowa  
563-678-2658  
lschultz@netins.net

**Past President**

Jenny Lou Huston, Texas  
210-494-2791  
phust@swbell.net

**Directors**

John Titus, Iowa  
563-785-4438  
imagesinink@iowatelecom.net

Joy Litteral

937-666-5481

CJ-Antiques@Columbus.rr.com

Miriam Corban, New Zealand

64-9-838-8947

orchids@xtra.co.nz

Wanda Faye Krick, Tennessee

931-393-1015

joekrick@charter.net

Grady Hite, North Carolina

336-924-8657

ahite@triad.rr.com

Richard Habenicht, Illinois

815-838-8456

reed1021@comcast.net

**Recording Secretary**

Theresa Newcomer, Pennsylvania

717-653-5976

chocset@aol.com

**Historian**

Mary Lou Bougher, Kentucky

502-247-7155

mlkbougher@msn.com

**Newsletter Editor**

Linda Titus, Iowa

Phone 563-785-4438

Fax 563-785-4673

PO Box 983

Durant, IA 52747-0983

imagesinink@iowatelecom.net

**Web Page Editor**

Ken Jinde, Canada

kenj89@rogers.com



## Notes from the President



*George Kandel*



Hello friends:

Happy holidays and a fresh joyous New Year!!!! This last year presented me with some unexpected obstacles. As of now, I'm much improved but I'll give you a quick update. I'll be finishing outpatient therapy two days before Christmas and it has been very beneficial. I'm walking without the assistance of a walker or cane. I still have occasional imbalance but I just have to stop and then start over. I'm driving my car in the county but haven't done any in or through Ft. Wayne or other large cities. I have a lack of clarity and volume with my voice but my medical people think this will still improve. I'm able to speak and be understood but not able to yell at my wife. There is good in everything. Most people state that things have gone well but I'm not one that has great understanding of all that I've experienced. Let me express my gratitude for all your cards, phone messages and prayers. These have aided me greatly. God bless you for all these expressions.

Now, for some things that have occurred. Terry Coy and his wife came to our house and drove us to Novi, Michigan for a meeting with the Michigan club and to inspect the improvements made by the hotel. It has been remodeled and recently I was notified that the new carpeting was laid. Some of the same management people are

still there from the staff that worked with us at our previous convention there. Beth Vandermeer has assumed the position of hospitality chairman and has nearly all in order as of now. I want to inform members that as our treasury has continued to grow I would like to subsidize some of the cost of the banquet meal. The meal has not been finalized as yet but if you have suggestion, please advise me sometime in January. Many of you made reservations early last year and it is a big help for our secretary. (Did I hear her say an amen?) Please respond to any requests Beth may have.

Terry Coy and Joe Krick continue to keep me informed about the site location for the 2008 convention. I intend to finalize sometime in January. The sites being considered have stated that as of now, no one else is looking for facilities when we need them and if someone does, they will advise us so we can have first choice. I need to say that the conduct and use of rooms at the conventions in which I have been involved speaks highly of our membership. May we continue to do so.

I look forward to resuming normal activities and seeing you again. Drop me a note or give me a call on any concerns you may have.

May God bless and comfort you,  
George

### *Newsletter Policy*

*This newsletter is the voice of the members of the International Association of R.S. Prussia, Inc. We welcome articles from members. We ask that articles be constructive and contribute positively to the welfare of the club and its members. The newsletter is printed four times a year. Publication mail dates are January 15, April 15, June 15, and September 15. Articles submitted for publication are due to the editor by the 15th of the month prior to publication and are subject to editing. (For example, items for the April issue would be due by March 15th) We look forward to hearing from you!*



Photo 5

Photo 5 is of an early R. S. Germany orange steeple marked plate showing the seated "woodland

nymph" décor. The Tiffany border has a slightly reflective copper sheen. Small dotted flowers in the mold accentuate the border.

Photo 6 is a red marked bowl with Tiffany panels in the border. The rose décor is in the satin finish.



Photo 6

Photo 7 is a Royal Vienna-marked vase that has a slightly metallic purple finish accentuated by gold, and is also considered to be Tiffany-style.



Photo 7

As with the use of gold on R. S. Prussia, the Tiffany finish has come to be associated with the most attractive R. S. Prussia and is a much sought-after feature. Handling RSP with the Tiffany finish should be done with care. As with the gold finished pieces, the Tiffany pieces are vulnerable to wear and fingerprint marks.

R. S. Prussia Tiffany pieces represent one of the most masterful porcelain design and production work that one can find for this period.



## Notes from the Secretary and Treasurer

Linn & Leslie Schultz

The 2006 membership dues have been rolling in, and we extend a big *THANK YOU* for paying in such a timely manner! This is our last year serving as your association secretary and treasurer and it has been an enjoyable experience. The positions

entail many responsibilities, but your positive comments have made the experience rewarding. Thanks!

Our wish to all of you for 2006 is simple: May you have good health, good friends, and a great time collecting R.S. Prussia!

### From Your Editor

Linda Titus



Happy New Year Prussia Friends!

With a new year ahead, we can make plans for convention and for getting together with those we only see once a year. Convention plans are underway and the Michigan group is hard at work putting together a great convention for us in Novi, Michigan at the Sheridan.

Put on your list of things to do this year to write an article for the newsletter. This particular issue is usually hard to fill up because everyone is taking a breath after the holidays, but fortunately, we

have several good articles submitted. Thanks to those who took time out of their busy schedule to write articles for us to enjoy.

I would like to remind everyone that the next issue will be mailed out with our 2006 roster books. If your listing has any information which needs to be updated, please be sure to let our secretary know soon, so that the books will have the correct information.

Also, your 2006 dues must be paid for your name to be listed in the roster, so be sure to get your check sent off to the treasurer!

## Letter to the editor

I was disappointed (but not surprised) that the Board off-handedly dismissed the Code of Ethics at their meeting this year. It's too bad that their memory does not go back one year to the 2004 convention when this was highly debated and it was asked that a code be written to obviate loose practices and provide fair and accurate sales at the conventions and on E-bay by RSP club members. I

volunteered to draft this document, so I was surprised that some board members couldn't understand why this was done. Lesson learned - don't volunteer! I drafted this because I thought prospective new members would see that integrity and established procedures are in place by the club. Unfortunately, this is not going to happen.

Allen Marcus  
Burke, VA

# Change Of Address

**Rich Habenicht**  
16343 Pioneer Parkway  
Lockport, IL 60441

**Onolee Blanchard**  
2964 Sprague Street  
Port Orchard, WA 98366

**Edwin Dullard**  
1596 East Gate Way #116  
Pleasanton, CA 94566

**Mike & Chris Kipe**  
1490 Castlegreen Drive  
Greencastle, PA 17225

**Marvin & Kay Kraus**  
205 Cedar  
Friend, NE 68359

**Linda Martin**  
34860 Monte Verde Road  
Temecula, CA 92592-9685

**Kelly & John Miller**  
139 Ruth Ann Way  
Arroyo Grande, CA 93420

## With Sincere Sympathy

*The R.S. Prussia Club  
extends its deepest sympathy  
to the family and friends  
of the following:*

**Don L. Wilhelm** of  
Kokomo, Indiana passed  
away on December 4, 2005.

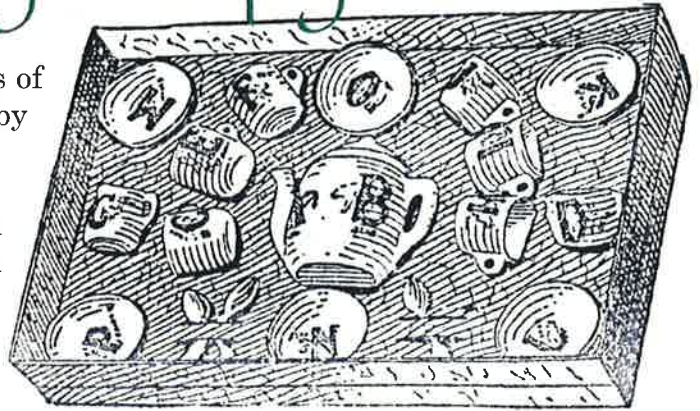
**Barbara Elliot** of  
Zanesville, Ohio passed  
away on August 11, 2005.

**Brooks Smith** of Lampe,  
Missouri passed away on  
May 5, 2005.

# Humpty Dumpty

by Lee Marple

One of the most interesting aspects of toy tea sets made by Reinhold's firm is that some that we know to have been sold in quantity in this country have never been found. Well, at least found by RS



Prussia collectors. The "Humpty Dumpty" set is a good example. This set was imported and sold by Butler Brothers in late 1896 to 1897. While the images on the individual pieces are hard to distinguish on the original catalog page, it is clear that an egg shape face plays a prominent role. I hope that the images on the individual pieces illustrated in the Fall 1897 Butler catalog will show up in the accompanying illustration. This set extends a series of sets made by Reinhold, first decorated in 1896 with the "A,B,C's" and later with exotic animals, Palmer Cox Brownies, and a rendition of the Three Little Pigs.

In my experience, all of these sets are very scarce. Where did they all go? Butler

imported goods in huge quantities, and these sets should be quite prevalent. But, for example, I know only of three sets of the Palmer Cox Brownies. Two sets were owned by a collector and were on a table display. But alas, their cat went crazy one day and jumped into their midst, damaging most of the pieces. I have seen only one partial set of the African animals, a partial set of the Three Pigs, and only one or two "ABC" sets. Was it that these sets were so appealing to children that they were actually played with, and as a result, pieces were damaged and ultimately thrown away?

To be sure, there are a lot of collectors of porcelain toy tea sets. So it is possible that many sets are in collector hands and



we just don't know about them. I do know that if one wants a real challenge, try collecting a complete set in each of the scenes mentioned here.

# Barnyard Scene

by Harvey & Mary Krage

Harvey and I are on the last leg of our journey home from Montana. We have spent a week with family. As usual, the week was packed with the usual activities, another trip with unexpected twists.

The conversation turns to our 1995 trip. At that time, we were novice Prussia collectors. We owned very few pieces of RSP and did not even have Gaston Book I.

At any rate, while there, of course, we talked about our "new hobby." My dear sister and I liked to prowl for "used things," so we all went downtown to the antique store. While browsing among the many things of interest, our eyes zeroed in on a bowl that had the "look," but nothing like the few pieces we had seen. In the center was a little group that we called "chickens." The bowl had the only mark we knew; that of the red wreath & star.

The store owner told us that she'd seen the bowl while out at a ranch. She recounted her shock at seeing the bowl on the table with gravy in it!

The price on the bowl was \$1500. That was about \$1400

more than we had paid for any of the few pieces we had already owned. We spent much time in the next few days talking about how much the "chicken bowl," as we called it, was worth.

On our last day before leaving, we decided to make an offer. Having no way of knowing or anybody to ask, we did the only logical thing. We picked a figure right straight out of the air, \$800. Down to the store we trooped and made that offer. The owner called whoever had the bowl and told her the offer. We could tell no one was excited. Then we heard the store owner say that not a lot of opportunities came along in Anaconda, Montana. The deal was done. The bowl returned to Minnesota. We got Gaston Book I and were introduced to the "Barnyard Scene."

In the ten years since then, the antique store has closed. No more pieces of Prussia porcelain have been seen in the West. Ironically, this trip we had another encounter with this beautiful porcelain, but that's a subject for another article.

# Welcome New Members



**Larry & Suzanne Hayes**

5413 Hearthstone Lane  
Brentwood, TN 37027

**Ashley Bryn Coughlin**

1134 Walnut Drive  
Danielsville, PA 18038

**Lisbeth & Glen Boaz**

211 Windsor Drive  
Lake Charles, LA 70605

**Ardythe Abbott**

1306 Knollwood Drive  
Monroeville, PA 15146

**Kurt Rostetter**

4229 Illinois Street  
Peoria Heights, IL 616161

**Laura & Gerald  
Whitmarsh**

911-66 Greenview Drive  
Kingston Ontario  
Canada K7M7C5



# Thank You

visits that I received during my hospital and Rehab stay during my back surgery. I am now recovering at home with Physical Therapy twice a week. It is a long process, but, feeling much better.

Very sincerely,  
Mary McCaslin

# Where Do All the Buffoons Go?



Submitted by Annette Hite

I'd seen the couple before but had no recollection that they'd ever shopped in our booth at the monthly antique show. She'd always looked cowed with submissiveness; he swaggered like a buffoon. Something caught her eye and she entered the booth nodding to me slightly, ever so slightly, when I greeted her. He stayed in the aisle, staring after her with arms crossed, a sneer on his face.

She lifted the tiny cup from the saucer that cradled it and smiled at its translucent delicacy, returned it softly to its perch and picked up the other: two pretty, dainty unmarked R. S. Prussia cups with rose decor embellished by minor hand painted details. "I've never seen such lovely china." I explained their origin, pointed out the hand painted areas and held them to the light for her to see their thinness.

"Come on woman!" She cringed and instinctively I stepped closer to her. Again the bellow. I knew she had to leave but before she did I said, "I bet my cups would have a good home with you and you may buy them for \$40.00." I had cut their

price in half. She nodded and hurried towards the now grumbling man, standing akimbo.

Less than an hour later she was back. I was surprised. I witnessed her sigh of relief that the cups were still present. She hurried towards me and pressed her tightly folded money into my hand. It felt damp; she'd held it in perspiring hands. There was no need to count the money. She had. I proceeded to get wrapping materials and a bag. I had wrapped three of the four pieces when he entered the booth. He walked to the far end and was as far from us as possible in the approximately eighteen foot long booth.

In his loudest possible voice he boomed, "I told you woman she'll (obviously meaning me) be laughing all the way to the bank. You're paying through the nose." People in the aisles, other booths and in my own booth stopped to see what the problem was.

I handed my customer the partially wrapped cup and walked closer, much closer to the man. He had no way of knowing that I am not easily intimidated. Personally and

professionally I can recognize bullies; they are more alike than different. I've cornered bullies all my life. I got very close to him, and with my face within three inches of his, I said very succinctly and quietly, almost whispering, "Sir, I have been fair to your wife. DO NOT ever scream at me or any other woman within my hearing." Then a little louder, "Now get out of my booth!" I, however, did not move. He could not get out of his corner without brushing into me and somehow (instinctively) I knew he wouldn't. I raised my voice, "I said get out of my booth!" He still could not move. The audience waited nervously. From the corner of my eye I see that a dealer/friend is hurrying towards my booth. Enough. I step aside and much louder than necessary exclaim, "Out!" He leaves.

His wife had wrapped the last cup and was holding the treasured purchase close to her breast. She smiled ever so slightly, "I promise I'll love these beautiful cups." Her hand, as soft as a butterfly wing, brushed my arm as she whispered a heartfelt, "Thank you!"

## Prussia "In The Web"

Submitted by John Titus



10" Portrait Plate  
\$249.99



Lebrun Celery  
\$200



10 1/2 " Floral Vase  
\$280



6" Vase  
\$175



Tea Pot  
\$195  
6



Snowbird Dresser Tray  
\$1890



Two Scene Bowl  
\$325



Icele Mold Master Medalion  
Berry Bowl (1 chip)  
\$330



8" Swan Vase  
\$162.38



Pair of Vases 5" (small chip)  
\$158.05



9" Summer Vase  
(damaged handle)  
\$400



Tea pot, Creamer, Sugar  
(small chip)  
\$390



Berry Set  
\$105.50



8 1/2" Cottage Vase  
\$355.50



14 1/2" Nightwatch  
Vase  
\$286



Chocolate Pot, 2 Cups  
small chip  
\$588



Castle Creamer, Castle Sugar  
\$299



Hidden House Plate  
\$204.06



Winter Keyhole Plate  
\$711



Coffee Pot  
\$299



Ripple Mold Cracker  
Jar  
\$249



10 1/2" Iris Vari Bowl  
\$179.99



Cracker Jar  
\$280.01



Portrait Vase  
\$430.99



Berry Set Season Portrait  
(damaged)  
\$2125



Sawtooth Tea Set  
\$246.49



Steeple Mold Dresser  
Tray  
\$666.23

# CONVENTION 2006

## JULY 27-30, 2006

### SHERATON DETROIT NOVI

21111 HAGGERTY ROAD  
NOVI, MICHIGAN 48375 UNITED STATES  
PHONE (248) 349-4000 OR (886) 873-4180  
FAX (248) 349-4066

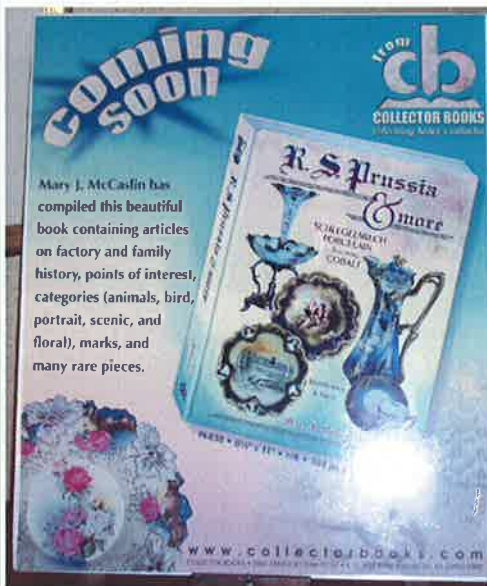
## \$99.00 PLUS TAX

ASK FOR THE INTERNATIONAL ASSOCIATION OF  
R.S. PRUSSIA RATE  
THIS RATE WILL NOT APPLY AFTER  
THE CUT OFF DATE OF JULY 17, 2006.



## R S Prussia & More Schlegelmilch Porcelain featuring Cobalt

Written by  
Mary McCaslin



# \$29.95

This hardbound book contains over 2,000 R.S. Prussia pieces. R.S. Prussia and other Schlegelmilch porcelains are displayed along with descriptions and suggested values. Cobalt is a feature with several examples. The book contains articles that include factory and family history, categories (animal, bird, portrait, scenic, and floral), points of interest, marks, and many rare pieces that have never been seen in books.

**To Order:**  
Email Mary McCaslin at  
[maryjack@indy.rr.com](mailto:maryjack@indy.rr.com) or write  
6887 Black Oak Court East  
Avon, IN 46123

## Future Conventions

**2006 CONVENTION**

Sheraton  
Novi, Michigan

**2007 CONVENTION**

Illinois - TBA

**2008 CONVENTION**

Kentucky - TBA

**Attention Members:**

If you hear of a death of any member, please let a board member or editor know as soon as possible, so we can publicize it in the newsletter.

*Thank you!*